

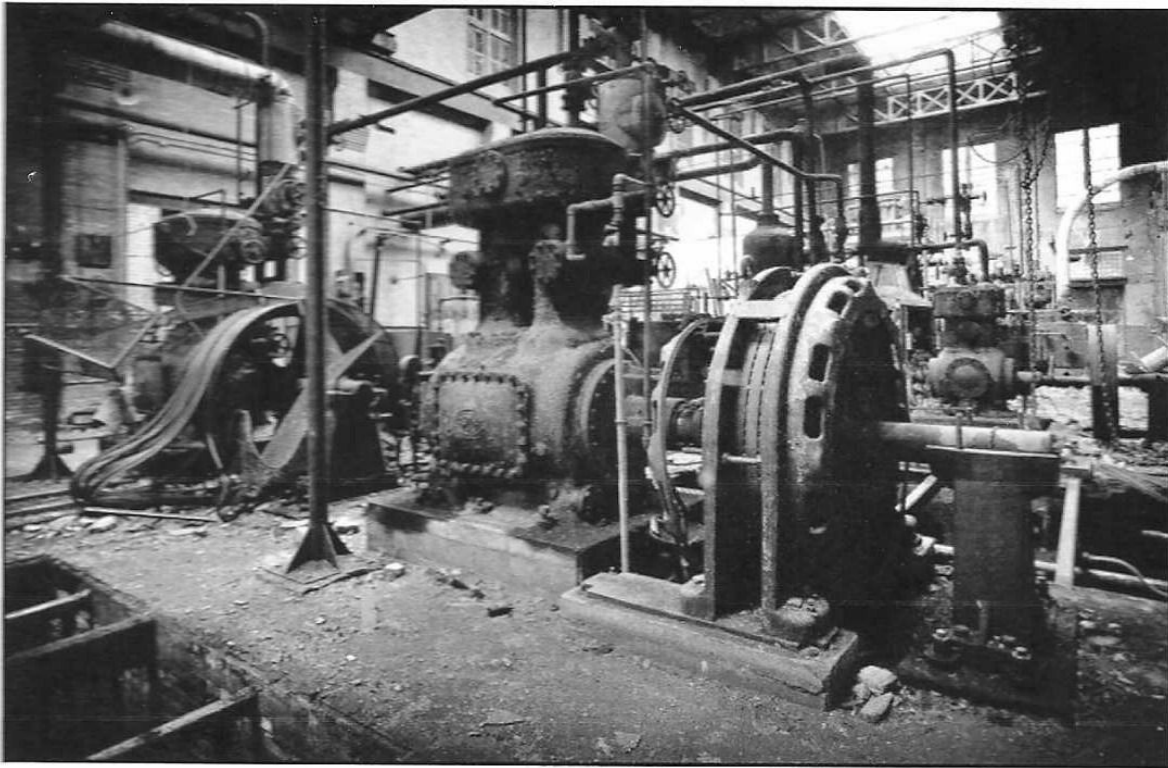
**American Refrigeration  
Cold Storage & Ice-Making 1875-1915**

# *Frick Refrigeration*



*Frick ice plant*

**Photographs from trade magazines of the 1800s**

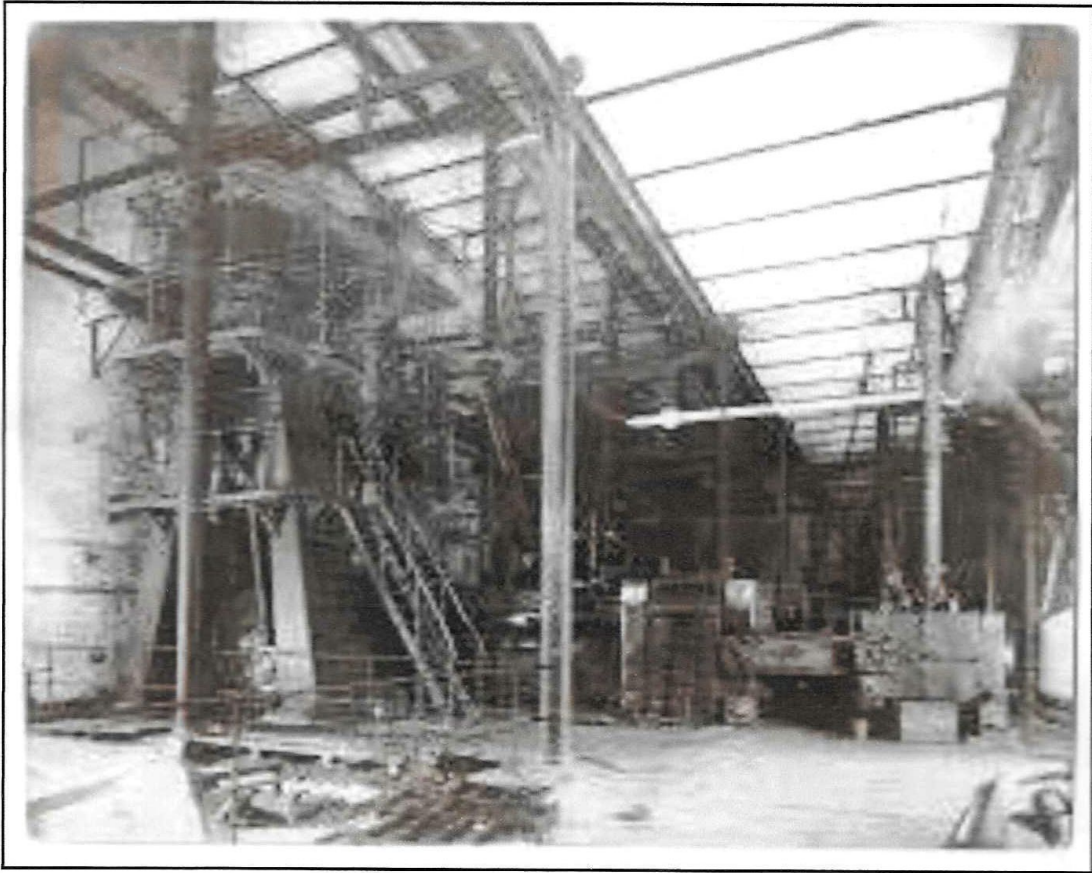


*Frick steam engine and generators at Armour plant in St Louis*

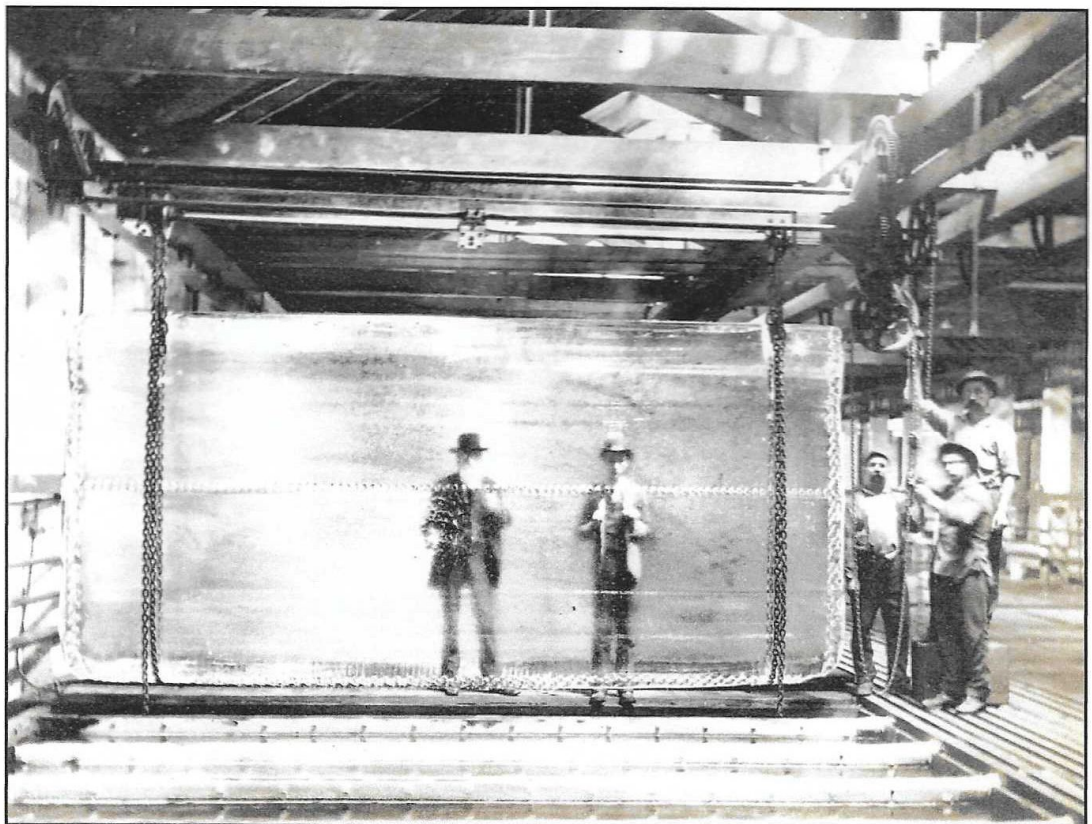


INTERIOR OF ONE OF OUR MAIN ERECTING SHOPS.  
Showing Refrigerating Machinery in Progress.

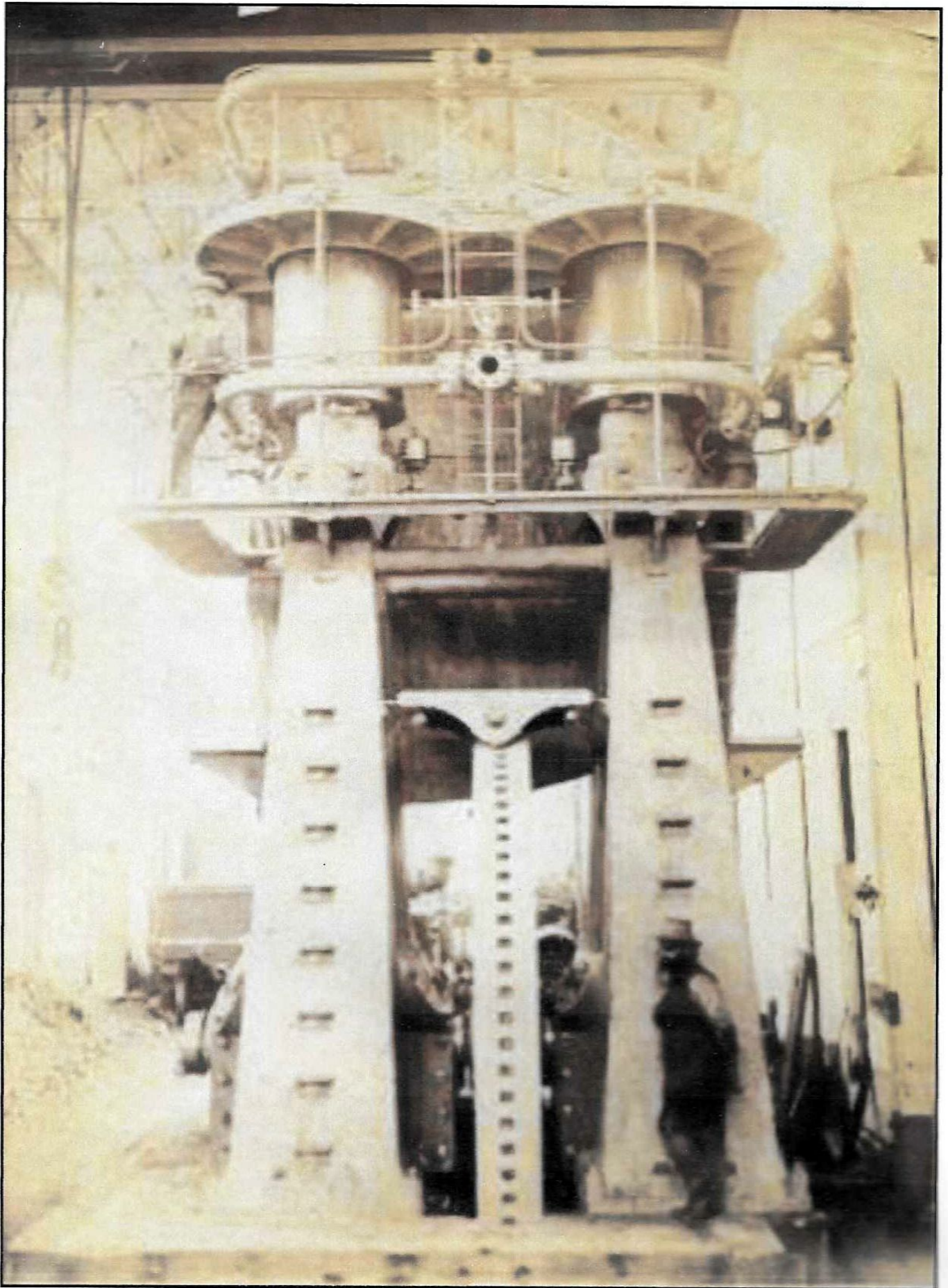
*Assembly of compressors at Frick Company, Waynesboro, Pennsylvania  
[Cold Storage, Vol.3, 1900]*



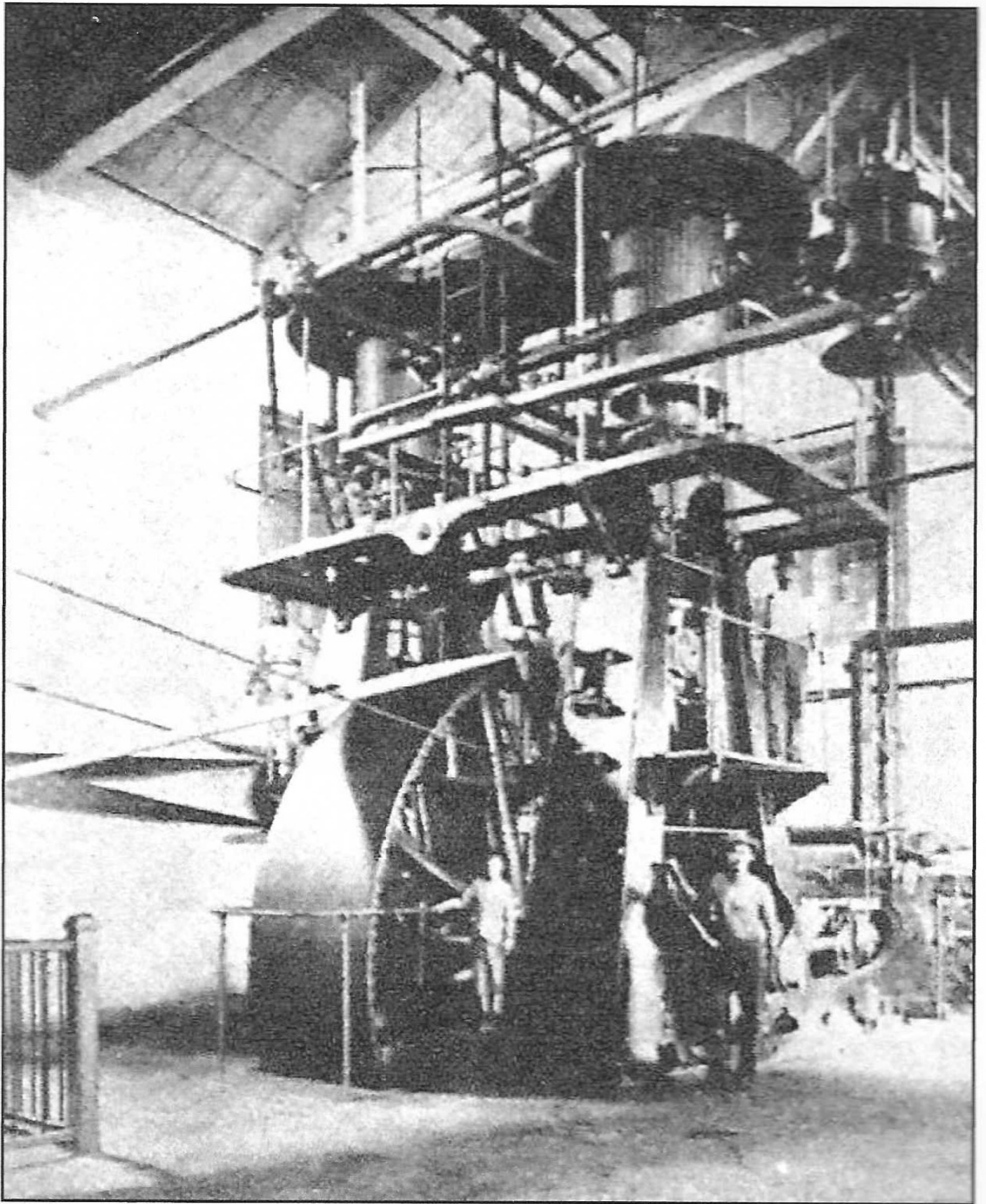
*Massive Frick refrigerating machine at the Armour meat-packing plant in Kansa City, Miss., 1896*



*Plate ice manufacture, undated*



*Early Frick machine*

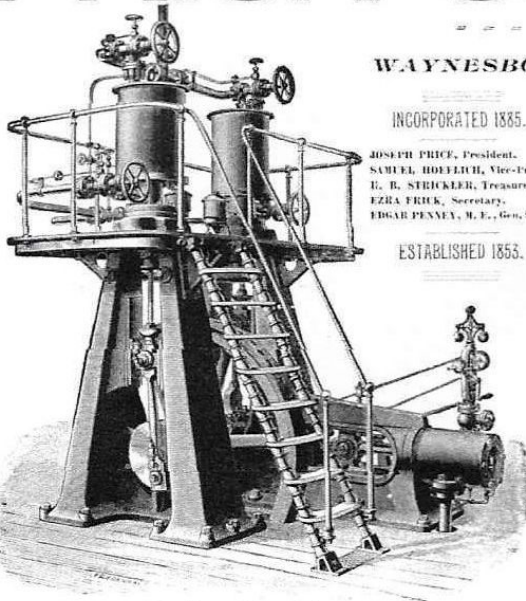


*Frick machine, Havana 1892*

# FRICK COMPANY

ENGINEERS.

WAYNESBORO, FRANKLIN COUNTY, PA., U. S. A.

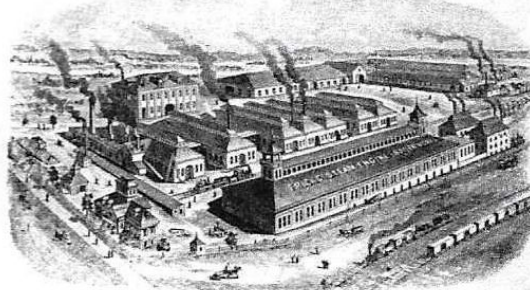


5-Ton Machine.

SEND FOR OUR NEW CATALOGUE, 1890.

### A Few References:

BREWERIES.		Refrigerating Tons.
Phoenix Brz. Co., Baltimore, Md.	.....	27
Gipps Brz. Co., Peoria, Ill.	.....	50
Spratler & Menell, Paterson, N. J.	.....	32
Herman Lackman, Cincinnati.	.....	65
Henry Fluk, Harrisburg, Pa.	.....	32
Sebastian Heddorfer, Baltimore, Md.	.....	32
Frank Reisch & Bros., Springfield, Ill.	.....	50
Jos. Stein & Co., Louisville, Ky.	.....	25
Meyer & Reddin, Covington, Ky.	.....	32
Parkersburg Brz. Co., Parkersburg, W. Va.	.....	27
Belleve Brz. Co., Cincinnati, O.	.....	50
Cumberland Brz. Co., Cumberland, Md.	.....	27
D. Latz & Son, Allegheny, Pa.	.....	50
Herman Lackman, Cincinnati (2d order)	.....	80
PACKING AND COLD STORAGE.		
J. C. Shafer & Co., Baltimore	.....	40
G. Cassard & Sons, Baltimore	.....	25
Baltimore City Storage Co., Baltimore	.....	32
Armour Packing Co., Kansas City	.....	100
Shallcross & Son, Gettysville, Pa.	.....	15
Washington Market Co., Washington, D. C.	.....	25
Armour Pk'g. Co., Kansas City (2d order)	.....	150
Francis Whittaker & Sons, Wichita, Kas.	.....	150
Emil Winters, Pittsburgh, Pa.	.....	37
Frank Seifrid, Louisville, Ky.	.....	7
Chicago Packing & Provision Co., Chicago	.....	150
Chicago Packing & Provision Co., Chicago	.....	150
(second order)	.....	150
Steelton Store Co., Steelton, Pa.	.....	10
Pittsb'gh Meat Supply Co., Allegheny, Pa.	.....	50
J. Vouge & Son, Cincinnati	.....	50
John C. Hately, Chicago	.....	45
G. H. Hammond & Co., Hammond, Ind.	.....	150
G. H. Hammond & Co., Omaha, Neb.	.....	150
Calumet Canning Co., Hammond, Ind.	.....	32
West Chester Cold Stor. Co., West Chester, Pa.	.....	40
Chautauqua Lake Ice Co., Pittsburg, Pa.	.....	20
ICE FACTORIES.		Ice. Tons.
F. L. Ellis & Co., Hopkinsville, Ky.	.....	100
Consumer Ice Co., New Orleans, La.	.....	100
Little Rock Ice Co., Little Rock, Ark.	.....	35
Owensboro Ice & Cold Stor. Co., O'f'bo, Ky.	.....	20
W. S. Linton, Jacksonville, Ill.	.....	15
Pulaski Ice Co., Pulaski, Tenn.	.....	5
Armour Packing Co., Kansas City	.....	75
Erving & Beall, Timonstown, Pa.	.....	15
S. W. Hill, Allegheny, Pa.	.....	18
Chautauqua Lake Ice Co., Pittsburg	.....	40
Chautauqua Lake Ice Co., Pittsburg (2d order)	.....	40
West Chester Ice Co., West Chester, Pa.	.....	15
Steelton Store Co., Steelton, Pa.	.....	2
Parkersburg Brz. Co., Parkersburg, W. Va.	.....	3
Cumberland Brz. Co., Cumberland, Md.	.....	8
Hagerstown Ice Co., Hagerstown, Md.	.....	20
Alberto Mado, City of Mexico, Mex.	.....	25
Germantown Ice Co., Germantown, Pa.	.....	20
Bryn Mawr Hotel Co., Bryn Mawr, Pa.	.....	20
Geo. S. Sexton & Co., Wethersville, Va.	.....	5
Cambridge Ice Co., Cambridge, Md.	.....	10



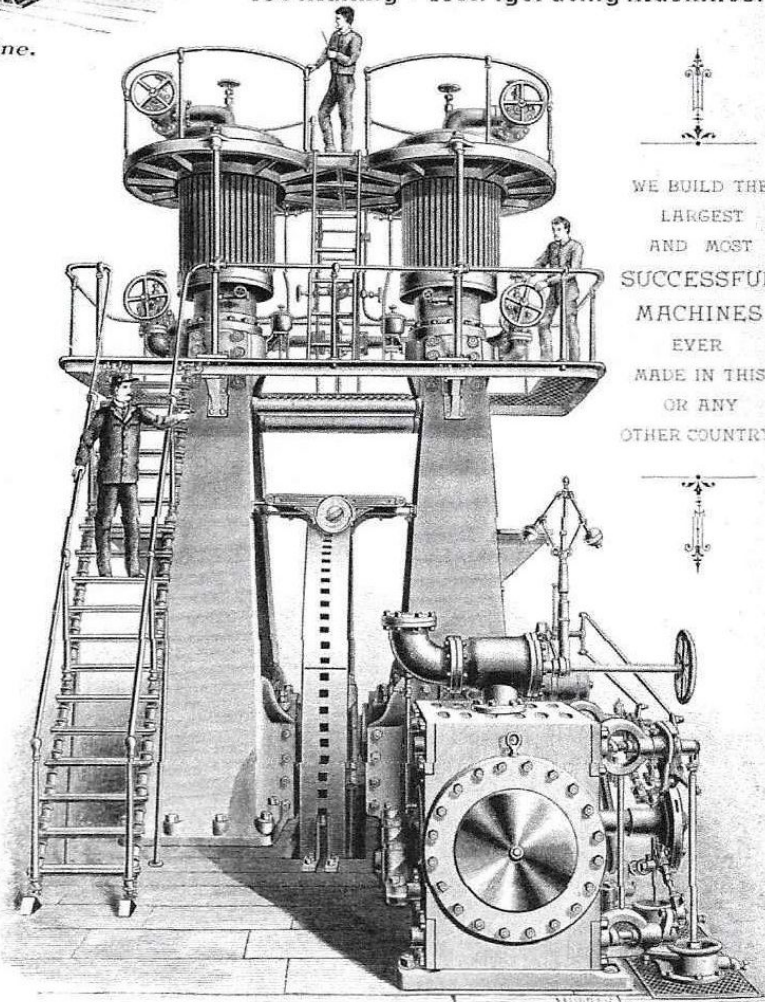
MAIN WORKS AND GENERAL OFFICES: WAYNESBORO, PA.

CAPITAL, \$1,000,000.

MANUFACTURERS OF THE

## ECLIPSE

Ice Making & Refrigerating Machines.

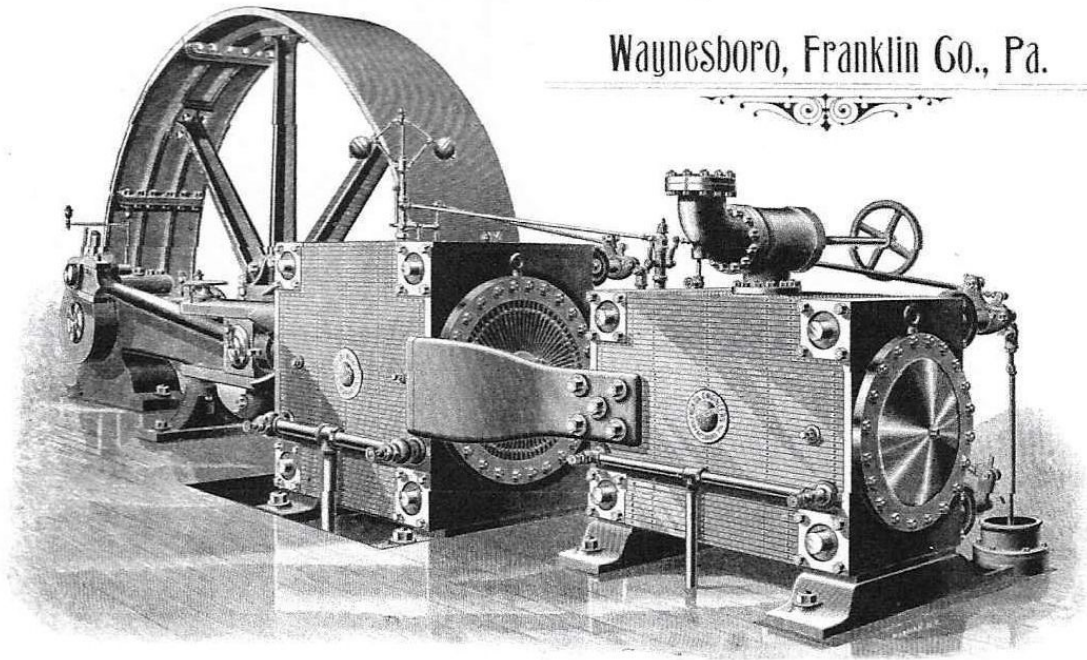


150-Ton Machine. Weight, 193,250 Pounds.

WE BUILD THE  
LARGEST  
AND MOST  
SUCCESSFUL  
MACHINES  
EVER  
MADE IN THIS  
OR ANY  
OTHER COUNTRY.

# FRICK COMPANY, ENGINEERS,

Waynesboro, Franklin Co., Pa.



A GENUINE CORLISS ENGINE WITH ALL THE LATEST IMPROVEMENTS.

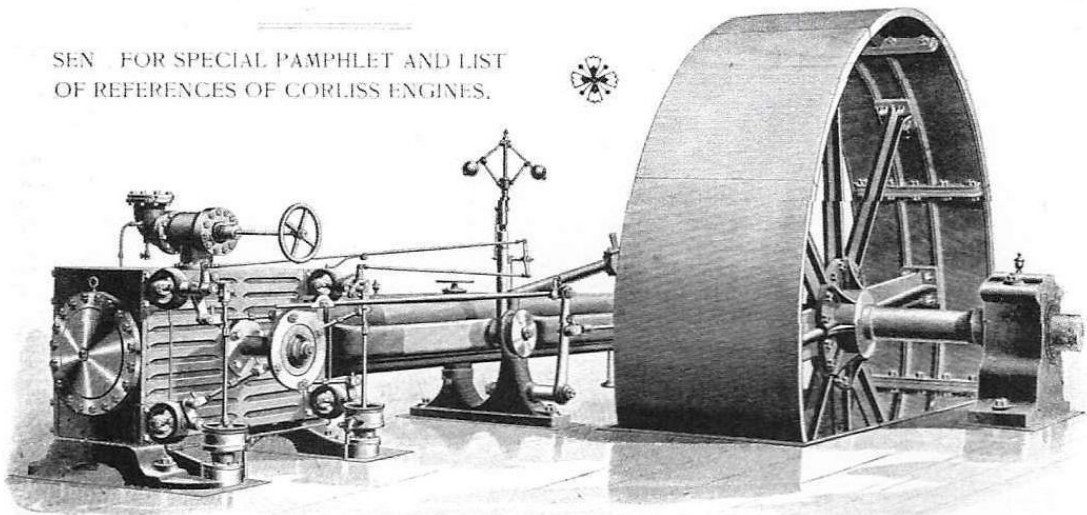
## "EGLIPSE" CORLISS TANDEM COMPOUND CONDENSING ENGINE

UP TO 3000 HORSE POWER

We have complete line of patterns and build Corliss Horizontal Stationary Engines, Corliss Vertical Engines, Condensing or Non-Condensing, Single or in Pairs. Corliss Compound Engines, Tandem or Cross Compound. Corliss Engines for any service, 40 to 3000 horse power, in a single engine.

SPECIAL NOTICE—With our Corliss Engine we contract for fitting up complete the entire Steam Plants including Steam Boiler, Feed Water Heater, Feed Pumps, Piping, Shafting, and all the appurtenances and belongings peculiar to a first-class job.

SEND FOR SPECIAL PAMPHLET AND LIST OF REFERENCES OF CORLISS ENGINES.



## 1000-HORSE POWER "EGLIPSE" PLAIN CORLISS ENGINE.



*The Frick factory*